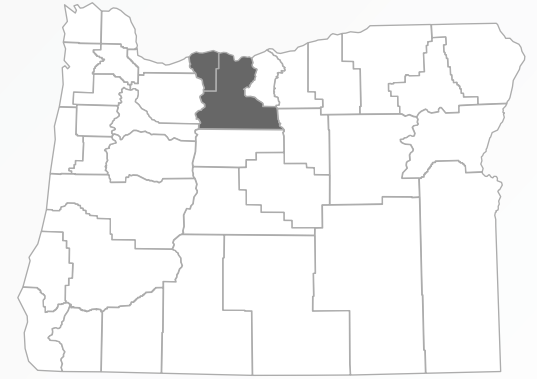
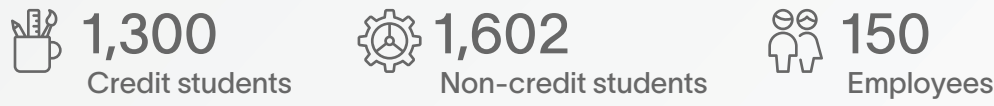


# The Economic Value of Columbia Gorge Community College

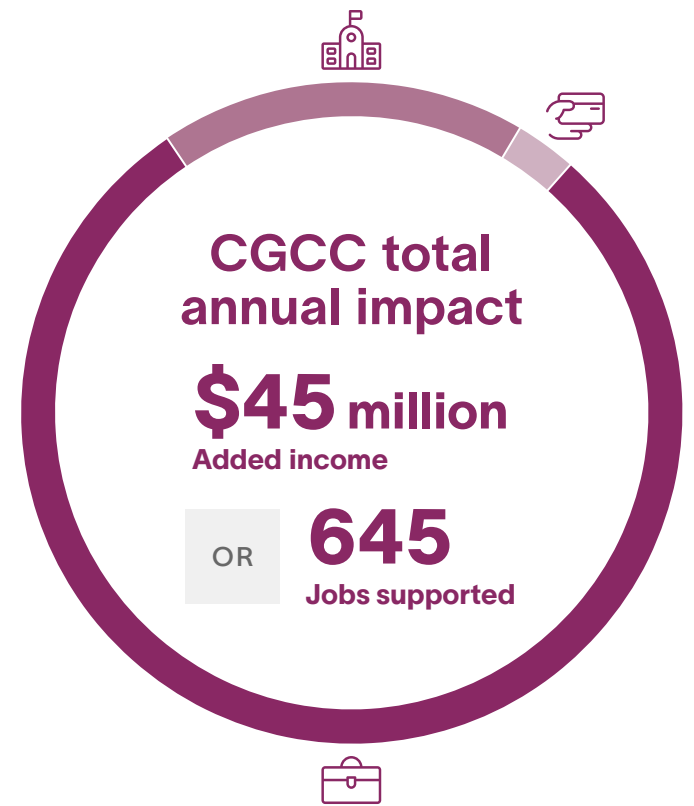
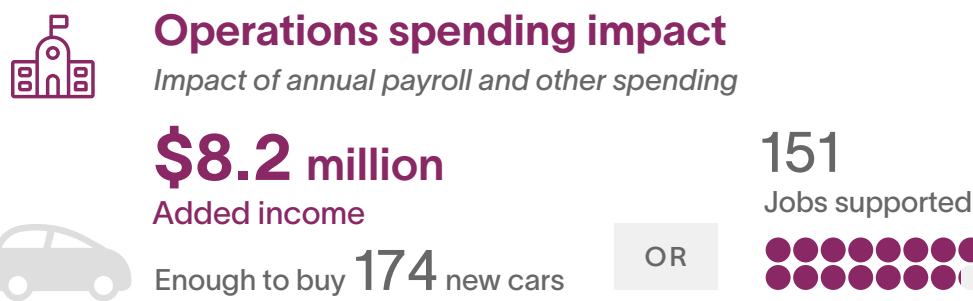
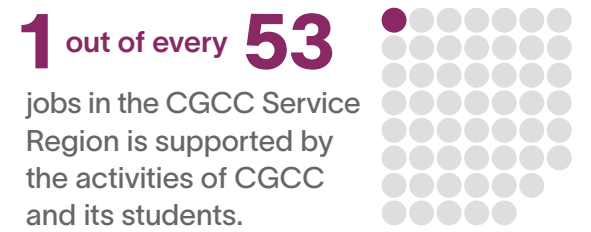
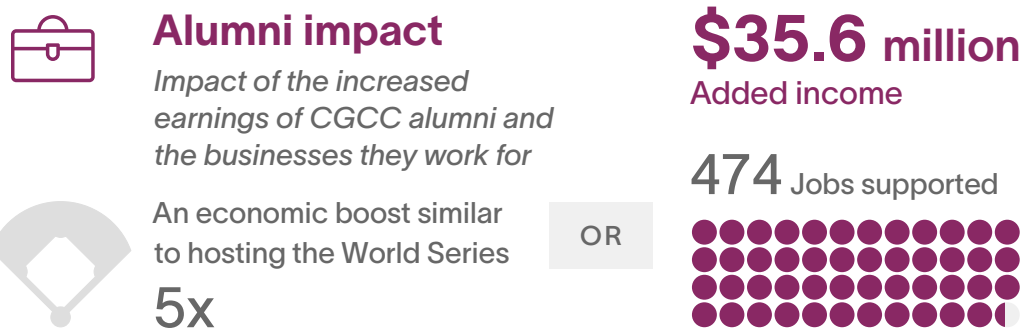


The CGCC Service Region, Oregon

## About CGCC



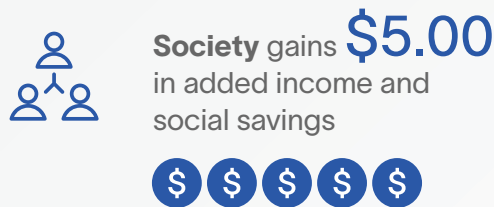
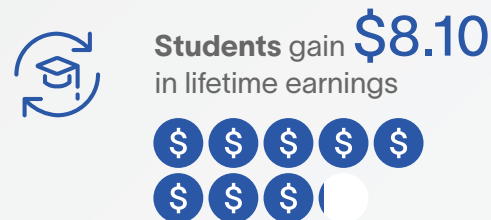
## Economic impact analysis



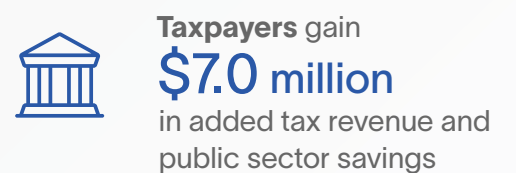
● = 10 jobs \* = family of four

## Investment analysis

### For every \$1...



### In total...



The average associate degree graduate from CGCC will see an increase in earnings of **\$7,000** each year compared to someone with a high school diploma working in Oregon.

