

Winter 2015

Issue 36

## Child Care Partners

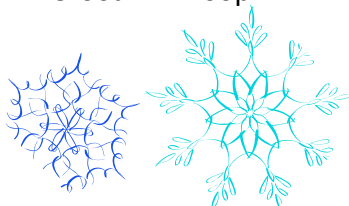
Child Care Resource & Referral  
of Gilliam, Hood River,  
Sherman, Wasco and Wheeler  
Counties

### Office Hours

Monday - Friday  
9:00am - 4:00pm

### Referral Hours

Monday - Thursday  
9:00am - 4:00pm

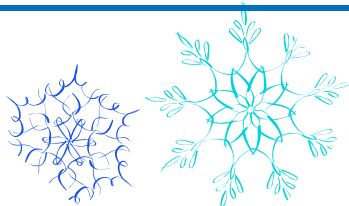


### Location:

**Columbia Gorge  
Community College**  
400 East Scenic Drive  
The Dalles, OR 97058

### Contact:

541-506-6131  
1-800-755-1143  
ccp@cgcc.edu  
cgcc.edu/childcare



## Child Care Partners

### will be closed:

Wednesday, Thursday, Friday  
December 24, 25, 26  
Christmas Holiday

Thursday, January 1  
New Years Day

Monday, January 19  
Martin Luther King Holiday



# Pathways

...to professional development

## Reminder when Attending Trainings



Please be on time. Classes will begin at their published start time. Participants who miss more than 15 minutes of class because of late arrival or leaving early will not be given full credit for the class. Total hours on your certificate will be changed to reflect your actual attendance.

**Thank you for your respect to instructors and other participants!**

## Recordatorio al Asistir a los Entrenamientos

Por favor de llegar a tiempo. Clases comenzaran al tiempo indicado. Los participantes que pierden mas de 15 minutos de clase por llegar tarde o por marcharse temprano no serán dados el crédito entero por la clase. El total de horas indicado en el certificado será cambiado para reflejar la asistencia actual.

**¡Gracias por respetar al instructor y a los demás participantes!**



**This issue will be the last mailed newsletter.**

Future newsletters will be coming to you via email. Please contact our office to verify that we have your current email address so you can continue to receive information about classes and recent happenings at Child Care Partners.

**Este es el ultimo boletín informativo que será  
mandado por correo postal.**

Boletines futuros serán mandados mediante el correo electrónico. Por favor de comunicarse con nuestra oficina para verificar su correo electrónico, solo así continuará recibiendo la información sobre las clases y los eventos recientes en Child Care Partners.



## Training Opportunities

**TO REGISTER FOR CLASSES—CALL STUDENT SERVICES 541-506-6011 • 541-308-8211**

**ONLINE REGISTRATION: [cgcc.edu/childcare/calendar](http://cgcc.edu/childcare/calendar)**

<p><b>Increasing Quality Training</b></p> <p>This session is the first step to participating in Oregon’s Quality Rating and Improvement System (QRIS), Oregon’s QRIS recognizes, rewards and builds on what you are already doing well and provides free tools, financial incentives and professional support to increase and document your quality. In this session, participants will explore QRIS participation through a step by step breakdown of the QRIS process and criteria and get an in depth look at the benefits of participating in Oregon’s QRIS. This is a Set one Program Management class. <b>Patten/Ochoa</b></p>	<p>Monday, January 12 <b>CRN# 1088053</b> Tuesday, February 17 <b>CRN# 1088055</b> Monday, March 30 <b>CRN# 1088054</b> <b>All classes 6-9 pm</b> Same class, different days and locations</p>	<p>TDC HRICC TDC</p>	<p>FREE</p>
<p><b>El Valor de las Herramientas de Evaluación— ESPAÑOL</b></p> <p>Los participantes podrán entender el valor de las herramientas de la evaluación. Repasaremos como las evaluaciones ayudan a detectar las necesidades del desarrollo de los niños y como apoyar esas necesidades. Exploraremos los diferentes tipos de evaluaciones que están disponibles y como usar buenas practicas al evaluar a los niños. Mediante la práctica y conversación, los participantes aprenderán lo básico de los tipos de evaluaciones, adquirirán las habilidades para el uso de tales. Esta clase es Nivel Uno para Observación y Evaluación. <b>Ochoa</b></p>	<p><b>Martes, 13 de Enero</b> 6:30—8:30 pm <b>CRN# 1088347</b></p>	<p>TDC</p>	<p>\$12</p>
<p><b>Implementing Developmental Screening: Using the Ages &amp; Stages Questionnaire—Third Edition (ASQ-3)</b></p> <p>The importance of screening and early intervention cannot be over emphasized. Oregon’s child care providers, home visitors and other learning and development professionals are in a unique position to identify developmental delays early. In this interactive, practical, hands-on session, participants will explore current health and early learning policies promoting developmental screening and examine implementation of developmental screening using the Ages and Stages Questionnaire (ASQ), including the ASQ Oregon website. Participants will also explore strategies and expand skills for engaging families around screen results and build capacity to navigate community resources and make referrals. This is a Set Two Family and Community Systems and Observation and Assessment class. QRIS domain LD. <b>Marino</b></p>	<p>Thursday, January 15 6-9 pm <b>CRN# 1088052</b></p>	<p>MCMC</p>	<p>\$20</p>
<p><b>Put It In Writing</b></p> <p>You will want to keep documents to protect yourself, your family and your business. What documents and/or forms do you have in your businesses record keeping system? This class for both new and current providers, will examine a number of forms including enrollment, emergency and other licensing required information. Each participant will receive their own personal “records binder” to get started and a CD with sample downloadable forms for their use. Participants will also explore what records they need to keep for tax purposes. This is a set one Program Management class. QRIS domain AB. <b>McFarlane</b></p>	<p>Wednesday, January 21 6-9 pm <b>CRN# 1088063</b></p>	<p>HRICC</p>	<p>\$12</p>
<p><b>I Am Moving, I am Learning: Body Language</b></p> <p>To become skillful movers, young children need a foundation of carefully selected movement experiences. The movement foundation includes appropriate instruction and ample opportunities for planned practice. Participants will learn to apply strategies that support moving and learning, utilizing four categories of movement awareness. You will utilize appropriate teaching cues to help children “talk to their muscles” and practice controlling movements and self-regulated behaviors. You will learn to create opportunities for children to physically experience vocabulary. This is a Set One Human Growth and Development class. QRIS domain LD. <b>Ochoa/Krueger</b></p>	<p>Thursday, January 22 6:30-8:30 pm <b>CRN# 1088349</b></p>	<p>Location in Wasco (city)</p>	<p>\$12</p>

## Training Opportunities

**TO REGISTER FOR CLASSES—CALL STUDENT SERVICES 541-506-6011 • 541-308-8211**

**ONLINE REGISTRATION: [cgcc.edu/childcare/calendar](http://cgcc.edu/childcare/calendar)**



<p><b>Pocket Full of Feelings: Building strong emotional Foundations in Children</b></p> <p>Giving children a strong emotional foundation is an important part of a child’s development. When we help children better understand their feelings and give them tools on how to deal with those feelings, we can reduce problematic behaviors and instill confidence in children. This course first gives an introduction and overview of the emotional literacy tool, Pocket Full of Feelings; and then creative ideas on how to implement this valuable program. This is a Set One Understand and Guiding Behavior Class. QRIS domain LD. <b>Richelderfer</b></p>	<p>Monday, January 26 6:30-8:30 pm</p> <p><b>CRN# 1088061</b></p>	<p>TDC</p>	<p>\$12</p>
<p><b>Partnering With Schools to Support Kindergarten Readiness</b></p> <p>Are your preschoolers ready for Kindergarten? How do you know? Partnering with schools is an important step in ensuring that the preschoolers in your program are prepared and ready to learn! Through case scenarios, analysis of the latest research and a critical evaluation of your current strategies we will create an implementation plan for partnering with the schools in your community to support children and family readiness for the transition to kindergarten. Participants will critically analyze their current system for connecting with schools. Participants will develop a partnership plan for partnering with elementary schools that are in your community. This is a 10 hour hybrid class. The first class will be 3 hours in class followed by 5 hours online, and concluding with a 2 hour face-to-face class. This is a Set 3 Family and Community Partnerships training. QRIS domain FP. <b>Marino</b></p>	<p>Thursday, January 29 6—9 pm</p> <p><b>CRN# 1088060</b></p> <p><b>Hybrid Class Set 3</b></p>	<p>TDC</p>	<p>\$50</p>
<p><b>Moving Up—Increasing Your Star Rating</b></p> <p>Have you reached a Star Level in the Oregon Quality Rating Improvement System? If so what are your next steps. Join us to discuss the differences in expectation between the star levels. Learn how to integrate new ideas and practices into your program on a daily basis. We will look at each of the domains and discuss ways to meet the standards. Participants will develop individualized strategies for increasing program quality. We will review the Professional Development Plan to assist you in moving up the Oregon Registry. Participants will need to bring their Quality Improvement Plans and a copy of their Professional Development Statement. This is a Set One Program Management class. <b>Patten/Ochoa</b></p>	<p>Tuesday, February 3 6-9 pm</p> <p><b>CRN# 1088056</b></p>	<p>TDC</p>	<p>\$12</p>
<p><b>Relationship-Based Inclusion Practices</b></p> <p>When you build positive relationships with the children in your program, you are on your way to inclusive practices! Join us as we study the way positive relationships influence and lead to inclusive practices. Through reflection and case studies we will discuss specific techniques to build a more inclusive program. Participants will study the influences and linkages of positive relationships and inclusive practices. Practice selecting strategies for creating inclusive programs. This is a Set Two Special Needs class. QRIS domain LD. <b>Marino</b></p>	<p>Wednesday, February 11 6-9 pm</p> <p><b>CRN# 1088067</b></p>	<p>HRICC</p>	<p>\$20</p>
<p><b>Practicas de Inclusión Basado en Relaciones Positivas— ESPAÑOL</b></p> <p>Quando usted forma relaciones positivas con los niños de su programa, usted está en el camino hacia las prácticas inclusivas. Acompáñenos, mientras estudiamos la manera en que las relaciones positivas influyen en los niños y llevan a prácticas inclusivas. Mediante la reflexión y los estudios de casos, conversaremos sobre técnicas específicas para formar un programa inclusivo. Los participantes estudiarán las influencias y los vínculos de las relaciones positivas y prácticas inclusivas. Practicaremos en seleccionar estrategias para crear programas inclusivos. Esta es Una Clase de Nivel 2 en Necesidades Especiales. Dominio del QRIS-LD. <b>Kristin</b></p>	<p><b>Miércoles, 11 de Febrero</b> 6-9 pm</p> <p><b>CRN# 1088062</b></p>	<p>HRICC</p>	<p>\$20</p>

## Training Opportunities

**TO REGISTER FOR CLASSES—CALL STUDENT SERVICES 541-506-6011 • 541-308-8211**

ONLINE REGISTRATION: [cgcc.edu/childcare/calendar](http://cgcc.edu/childcare/calendar)

<p><b>Ethics and the Child Care Provider</b></p> <p>Working with children, families and communities can present difficult challenges based on value and ethics. In this workshop participants will understand the basics of professional ethical conduct and learn and practice how to apply the code to your relationships within the community. Learn and develop a deeper understanding of the ethical dimensions of your work with children and families. Develop the skills needed to identify and analyze ethical dilemmas. This is a Set Two Personal Professional and Leadership Development class. QRIS domain PQ. <b>Marino</b></p>	<p>Thursday , February 19 6-9 pm <b>CRN# 1088348</b></p>	<p>MCMC</p>	<p>\$20</p>
<p><b>All 4 Math—Session 1: Understanding Number and Operation</b></p> <p>The more intentional and focused support young children receive around math knowledge and skill development—the greater their understanding and skill in math will be. Participants will be introduced to the foundations of math knowledge and skills from birth-to-five, and gain an understanding of how children learn about number and operations. Participants will become aware of ways to promote children’s knowledge of numbers and children’s skills in using math as part of everyday experiences. This is a Set One Learning Environments and Curriculum class. ORIS domain LD.</p> <p style="text-align: center;"><b>-Session 2: The Basics of Geometry and Spatial Senses</b></p> <p>Exposure matters! When young children have opportunities for hands on play and exploration and adults use “match talk” throughout the day, children gain greater math knowledge and skills. In this training, you will be introduced to the foundations of geometry and spatial sense which are developing in young children birth-to-five. You will become aware of ways to promote children’s knowledge of geometry and spatial sense and their skills using math throughout the day. This is a Set One Learning Environments and Curriculum class. QRIS domain LD.</p> <p style="text-align: center;"><b>-Session 3: The Beginning of Patterns</b></p> <p>In this training, participants will gain an understanding of how young children develop math knowledge and skills in the area of patterns, measurement and comparison. The session will also introduce a variety of ways to promote children’s understanding of and skill with patterns, measurement and comparison. This is a Set One Learning Environments and Curriculum class. QRIS domain LD.</p> <p><b>Smith/Ochoa Instructor for all classes.</b></p> <p><b>*Sessions must be taken in order, starting with the first session.*</b></p>	<p>Monday, March 2 6—9 pm <b>CRN# 1088344</b></p> <p>Monday, March 9 6-9 pm <b>CRN# 108345</b></p> <p>Monday, March 16 6-9 pm <b>CRN#1088346</b></p>	<p>HRICC</p> <p>HRICC</p> <p>HRICC</p>	<p>\$12</p> <p>\$12</p> <p>\$12</p>
<p><b>The Importance of Play: Developing Play Skills in Young Children</b></p> <p>Play skills are life skills! Being able to imagine and be spontaneous leads to the building blocks of human relationships and makes happy, healthier children. To help children learn to play, providers need to support the development of play skills and provide activities that promote imaginations and new ideas. Participants will examine the relationships between play and child development. We will explore strategies for supporting children who need assistance developing play skills. Practice selecting play skill activities for the children in your program. This is a Set Two Human Growth and Development</p>	<p>Wednesday, March 18 6-9 pm <b>CRN# 1088346</b></p>	<p>TDC</p>	<p>\$20</p>

It is the policy of Columbia Gorge Community College and its Board of Education that there will be no discrimination or harassment on the grounds of race, color, sex, marital status, national origin, religion, age, disability, veteran status, sexual orientation, and any other status protected by applicable local, state, or federal law in any educational programs, activities or employment.

Persons having questions about equal opportunity and nondiscrimination should contact:  
 Employment: Robb Van Cleave, Chief Talent & Strategy Officer—(541) 506-6151  
 Educational and Student Programs, Activities, and Services: Lori Ufford, Chief Academic and Student Affairs Officer—(541) 506-6031



The series, Early Literacy for Dual Language Learners, is being offered by Child Care Partners and has a record breaking enrollment of 80 students. The trainings have been developed and are being presented by Dr. Dawn Hendricks. Participants will attend five trainings between October, 2014 and April, 2015. Each training builds on the previous, allowing for much more in-depth understanding of the needs of multi-lingual children and families. The goal is to increase the opportunities for

children to experience quality programs that support their school readiness and prepare them for success in school and in life. To support this goal, a cohort of coaches is being prepared to provide on-going support and mentoring. Coaches and participants, together, will support continuing progress as we work to create a lasting impact for children in our region. This opportunity has been made available thanks to an Early Literacy Grant from the Oregon Early Learning Division. Child Care Partners

received the grant in collaboration with Oregon Child Development Coalition and the Wasco County Public Library. Grant funding allowed participants to receive all trainings and materials at no cost. In addition to the trainings, the grant project also includes family literacy events, library awareness nights, and an assortment of new, bilingual materials to be housed in the public library in order to enrich the resources available for the entire community.

## New Providers

Izidora C.

Yolanda G.

Rachel J.

Ariel S.

Ana R.

Leanna G.

Heidi B.

Rose C.

Molly M.

Debra M.

Anna D.

Starla H.

Jennifer B.

## Literatura y Lenguaje Dual en La Edad Temprana

La serie de Early Literacy for Dual Language Learners, a sido ofrecida por Child Care Partners y tiene un récord sobresaliente de 80 estudiantes inscritos. Los entrenamientos han sido desarrollados y presentados por la Dra. Dawn Hendricks. Los participantes asistirán a cinco entrenamientos, comenzando en Octubre del 2014 hasta Abril del 2015. Cada entrenamiento agrega mas a lo anterior, permitiendo mucho mas entendimiento profundo de las necesidades de niños y familias multilingües. La meta es de aumentar las oportunidades para que los niños

experimenten programas de calidad que apoyan las habilidades de la preparación escolar y prepararlos para que tengan éxito en la escuela y en la vida. Para poder apoyar esta meta, se a preparado un grupo de mentores para proveer apoyo continuo. Los mentores y participantes, juntos, proveerán apoyo continuo en el proceso mientras trabajamos para crear un impacto a largo plazo para los niños en nuestra región. Esta oportunidad ha sido disponible gracias a la beca de Early Learning que proviene del Oregon Early Learning Division. Child Care Partners

recibió la beca en colaboración con Oregon Child Development Coalition y Wasco County Public Library. Los fondos de la beca permitió que los participantes recibieran todos los entrenamientos y materiales sin costo alguno. En adición a los entrenamientos, el proyecto de la beca incluye eventos de lectura para las familias, noches en la biblioteca, y una diversidad de materiales que estarán disponibles en la biblioteca publica para propósitos de enriquecer los recursos, que estarán disponibles para la toda comunidad entera.

# QRIS RECOGNITION

We would like to recognize the programs that are now participating in Oregon's Quality Rating and Improvement System, and those that have received a rating!

The following programs have made a commitment to providing quality child care (since the last Newsletter):

- Shawn's Little Dragons
- Kids Kount
- Claudette's Day Care

**These programs have been designated as 3 Star Programs:**

- Emma's Playhouse
- Rachel's Corner ★★ ★
- Great n Small Child Development Center

"Working on the new QRIS program was challenging at first, but with the help of the staff at Child Care Partners I was able to meet the goal that I had set for myself to become a three star program. I am very happy with the improvements that I was able to make to my certified day care and feel that I now can better meet the needs of my clients and the children in my care. Don't get overwhelmed. Take one section at a time, you will be glad you did."



Kathryn Ford, Certified Child Care Provider

"We are thrilled to be awarded a three star rating! It is exciting for our whole team to have this recognition of quality at Great 'n Small. The process is a very detailed one and a lot of time went into it, but the thorough approach makes the designation award even more meaningful. We look forward to the future and continued quality enhancements as our program continues to develop and grow."



Valerie Kendrick, Director of Child Development Services

## Top 5

### Reasons to Participate in Oregon's QRIS

1 Be recognized for your professionalism and quality

2 Get free professional support on improving your program

3 Gain access to financial supports and rewards

4 Join a rating system that parents can use to access quality care

5 Support Oregon's efforts to improve child outcomes

## Professional Improvement Group

P.I.G. offers:

- Training and Support
- Professional Development Advising
- Individualized Support
- Proof Reading
- Work Sessions
- Educational Awards
- Step Applications
- Send Training to Oregon Registry Online
- Quality Improvement Plan
- QRIS Portfolio
- CDA Portfolio
- Scholarships
- Resources (Books, Forms, Videos, Web Forums, etc.)

Third Wednesday of Each Month

## Next Available Increasing Quality Trainings:

January 12th, 2015

At The Dalles Campus

6 pm—9pm

February 17th, 2015

At Hood River Campus

6 pm—9 pm

March 30th, 2015

At The Dalles Campus

6 pm—9 pm

To Register Call:

541-506-6011

Visit. Join. Support.

[teachingresearchinstitute.org/projects/qrisc](http://teachingresearchinstitute.org/projects/qrisc)

[facebook.com/OregonQRIS](https://facebook.com/OregonQRIS)

[twitter.com/OregonQRIS](https://twitter.com/OregonQRIS)

1-800-342-6712



## Snow Slime Recipe

2 cups of white school glue  
1 & 1/2 cups of very warm water  
Iridescent glitter  
Optional: a few drops of peppermint extract  
to give the snow slime a fresh and clean scent

Combine in a small bowl

In a second bowl combine  
3/4 teaspoons of borax  
1 & 1/3 cups very warm water

Mix the ingredients of both bowls well and then combine both bowls. Mix the ingredients with your hands for a few minutes. As the ingredients are mixed the snow slime will form

*Extend the play:* Give the kids buttons and pipe cleaners to make their own snowmen

### Supreme Pizza Smiles

3 whole-wheat English muffins  
1/2 cup pizza sauce  
1/2 cup shredded mozzarella cheese  
1/4 cup green bell peppers, sliced  
1/4 cup yellow bell peppers, sliced  
1/4 cup red bell peppers, sliced  
7 pitted black olives



Preheat oven to 375 degrees.

Spray a cookie sheet with cooking spray.

Spread the pizza sauce lightly on each half of the English muffin

Sprinkle each muffin with reduced fat mozzarella cheese.

For toppings:

To make the mouth of the pizza face, slice green pepper and yellow pepper length wise and make a smile on each muffin.

To make the nose of the pizza face, slice the black olives in half and place one piece on each muffin

To make the eyes of the pizza face, slice the red pepper into small pieces and place on top of each muffin. Next place a small slice of green pepper or yellow pepper above the red pepper eye. Cut small pieces of a black olive to make the inner dot on the eye.

Bake pizza smiles for 10-15 minutes until cheese is melted and bubbling.



### **EIN (Employer Identification Number)**

Many parents are eligible for a child care tax credit on their federal, and sometimes state, tax returns. To claim this credit, parents will need to obtain their provider's Social Security number, TIN or Employer Identification Number (EIN).

What do you need to provide to your families claiming the credit? You should provide a receipt each time a family pays for your services. You also need to track the amount the family pays throughout the year and issue an end of the year statement for each child.

For privacy concerns, providers may not want to give out their Social Security Number and may request a EIN from the IRS. How?

Go to [www.irs.gov](http://www.irs.gov) and apply. This is free and you will receive your number immediately.

Contact **Israel Ayala** at SBDC for questions:

**541-506-6125**



### **EIN (Identificación de Empleador)**

Muchos padres de familia son elegibles para un crédito tributario por pagar el cuidado de sus niños en sus declaraciones de impuestos federales y en ocasiones estatales. Para reclamar este crédito, los padres necesitarán obtener de su proveedor, el número de Seguro Social, TIN o número de identificación de empleador (EIN).

¿Qué necesitas proporcionar a tus familias que reclaman el crédito? Debe proporcionar un recibo cada vez que una familia paga por tus servicios. También, necesitas saber la cantidad en total de lo que la familia te paga durante todo el año y emitir un recibo al final del año por cada niño.

Por cuestiones de privacidad, los proveedores no querrán dar su número de Seguro Social y pueden solicitar un número de EIN del IRS. ¿Cómo?

Ingrese a [www.irs.gov](http://www.irs.gov) y solicite su número. Este servicio es gratuito para usted y recibirá inmediatamente su número de identificación de empleador.

Comuníquese con **Israel Ayala** en SBDC si tiene preguntas: **541-506-6125**

Child Care Partners

Columbia Gorge Community College

400 East Scenic Drive

The Dalles OR 97058



Non Profit Organization

US Postage Paid

The Dalles OR

Permit No. 173

## Child Care Partners

Child Care Resource & Referral of Gilliam,

Hood River, Sherman, Wasco and Wheeler Counties

Website: [www.cgcc.edu/childcare](http://www.cgcc.edu/childcare)

Email: [ccp@cgcc.edu](mailto:ccp@cgcc.edu) Phone: 541-506-6131

**Nancey Patten, Director**

**Kathleen McFarlane, Early Childhood Specialist**

**Noemi Ochoa, Bilingual Early Childhood Specialist/  
Quality Improvement Specialist**

**Kristen Richelderfer, Administrative Assistant**

Child Care Partners is a member of

**Child Care Aware of America**

[www.naccrra.org](http://www.naccrra.org)



## Child Care Partners on Facebook

Be able to view:

- \* **Upcoming Trainings**
- \* **Resources and Events in the Community**
- \* **Ask questions (ORO, QRIS, CDA, Training, etc.)**
- \* **Update Vacancies**
- \* **Contact Child Care Partners through Facebook messaging.**
- \* **Request Trainings**

