

# Pathways

....TO PROFESSIONAL DEVELOPMENT

## 4 Easy Ways to Garden with Children

1. Start an herb garden: These are great for Children because they're virtually fool-proof, and they're great for *you* because they provide abundant flavor for meals. They don't take much – a bit of soil, lots of sunlight, and watering.
2. Give your children containers: Let the kids oversee a little galvanized bucket of strawberries. Strawberries are hardy little guys, and most children love them.
3. Another fun child-friendly idea is a pizza planter: Pick a cheap, creative container and grow all in one bucket a tomato plant, oregano, basil, thyme, peppers, and any other container-friendly pizza topping. Make homemade pizza and your children will enjoy heading to their own garden for the ingredients.
4. Try your hand at square-foot gardening: Create a simple raised bed. Divide up the soil in square foot sections, and grow a plant in each section – after harvesting, simply start a new plant.  
Give each of your children a square foot to oversee, and let them pick their plants.

## 4 Maneras para Involucrar a los Niños en la Jardinería

1. Comience un Jardín de Yerbas: Estos son muy apropiados para los niños, puesto que son fáciles para crecer, y son útiles para proveer un abundante de sabores para las comidas. No requieren mucha atención – solo un poco de tierra, bastante sol, y agua.
2. Proporcione Recipientes a los Niños: Deje que los niños supervisen un recipiente con plantas de fresas. La mayoría de los niños les encanta las fresas.
4. Otra idea que es apropiada para los niños, es una maceta de pizza: Elija un recipiente barato y creativo. Plante plantas de jitomate, orégano, albacar, tomillo, chiles y cualquier otro condimento que sea fácil de crecer para agregar a su pizza. Prepare una pizza y los niños disfrutarán de cosechar los condimentos del jardín.
3. Intente un Jardín de un pie cuadrado: Crea un arriate levantado. Divida la tierra en secciones de un pie cuadrado, y plante una planta en cada sección – después de la cosecha, simplemente plante otra planta en su lugar.  
Proporcione a cada niño un pie cuadrado para que lo supervise, y permita que cada quien coseche su planta.

## APRIL 2016

Sun	Mon	Tue	Wed	Thu	Fri	Sat
					1	2
3	4	5	6 ●	7	8 ●	9
10	11	12 ●	13	14	15	16
17	18	19	20 ●	21	22	23
24	25 ●	26	27	28 ●	29	30

## MAY 2016

Sun	Mon	Tue	Wed	Thu	Fri	Sat
1	2 ●	3	4 ●	5	6 ●	7
8	9	10 ●	11	12	13	14
15	16	17	18 ●	19 ●	20	21
22	23 ●	24	25	26 ●	27	28
29	30	31				

## JUNE 2016

Sun	Mon	Tue	Wed	Thu	Fri	Sat
			1 ●	2	3	4
5	6	7	8	9	10	11
12	13	14 ●	15 ●	16	17	18
19	20	21	22	23	24	25
26	27	28	29	30		

3/29—First Connections:  
Developing Emotional Strengths

4/6— Crazy Making: Adult  
Behaviors that Drive Children  
Crazy

4/8—Secret Garden to Synapse:  
The Power of Playing Outside

4/12—Developmental Screening  
in ECE

4/20—P.I.G. 5:00 pm– 6:30 pm

4/25—Volviéndolos Locos:  
Comportamientos de los Adultos  
que vuelven locos a los niños

4/28—Increasing Quality Training

5/2—Recognizing & Reporting  
Child Abuse & Neglect

5/4—TALE: Modulo 4:  
Involucramiento Familiar

5/6—Ethics and the Childhood  
Care Provider

5/10—Linking Curriculum,  
Outcomes & Child Development

5/18—P.I.G. 5:00 pm– 6:30 pm

5/19—Connecting with Families

5/23— Reflection as a Practice

5/26—Reflexión como Practica

6/1—Including Samuel

6/14— Working with Families

6/15—P.I.G. 5:00 pm– 6:30 pm

# SPRING TRAINING SCHEDULE 2016

Like our [Facebook Page](#) and view our upcoming trainings, community events and resources. Search for “Child Care Partners” in your search bar and “LIKE” our page. You may also visit our website to view additional information regarding training sessions or to register online.

To Register Call: [541-506-6011](tel:541-506-6011) or Register Online at: [www.cgcc.edu/childcare/calendar](http://www.cgcc.edu/childcare/calendar)

## First Connections Session 3: Developing Emotional Strengths

March 29th, 2016

**CRN:**1089920 **Cost:** \$12 **Time:** 6:00 pm– 9:00 pm **Presented by:** J. Smith **Location:** TDC **CKC:** Human Growth and Development (HGD)

Young children experience a series of distinctive social-emotional stages as they grow. The emotional grounding in early stages provides the foundation for development in later stages. A caregiver's role is to understand these stages and learn how to support infants and toddlers in their development of life's first feelings.

Set One

## Crazy Making: Adult Behaviors that Drive Children Crazy

April 6, 2016

**CRN:**1089932 **Cost:** \$20 **Time:** 6:00 pm– 9:00 pm **Presenter:** T. Marino **Location:** TDC **CKC:** Understanding & Guiding Behavior (UGB)

Ever think about the things adults can do that promote discipline issues in young children? In this workshop we will examine the communication styles that can actually lead to challenging behaviors and how adults can inadvertently cause them, too. We will also look at natural consequences and how adults can support self-control in children.

Set Two

## Secret Garden to Synapse: The Power of Playing Outside

April 8th, 2016

**CRN:**1089929 **Cost:** \$20 **Time:** 9:00 am-12:00 pm **Presented by:** J. Smith **Location:** TDC **CKC:** Human Growth & Development (HGD) & Learning Environments & Curriculum (LEC)

The importance of play tends to be underestimated, and be considered unnecessary rather than essential to a child's development. This training session will explore play and its influences on child development. Participants will examine the link between play, the outdoors, and the brain, and develop strategies for including nature into everyday play.

Set Two

## Developmental Screening in ECE

April 12th, 2016

**CRN:**1089918 **Cost:** \$20 **Time:** 6:00 pm– 9:00 pm **Presented by:** A. Lamanto **Location:** TDC **CKC:** Observation & Assessment (OA)

What is developmental screening? What does it look like in early learning and school-age programs? In this session we will explore the process of developmental screening and methods for integrating the process and information into your program setting. In addition, we will examine techniques for supporting diverse methods that assist in obtaining screening information that represents the whole child.

Set Two

## Volviéndolos Locos: Comportamientos de los Adultos que vuelven locos a los niños

25 de Abril del 2016

**CRN:**1089921 **Costó:** \$20 **Time:** 6:00 pm– 9:00 pm **Presentador:** S. Kristin **Lugar:** TDC **CKC:** Entrenamiento/Orientación de Conducta (UGB)

¿Se ha puesto a pensar alguna vez de las cosas que hacen los adultos que promueve problemas de disciplina en los niños pequeños? En este taller examinaremos los estilos de comunicación que pueden inducir los comportamientos difíciles y como pueden los adultos apoyar el auto-dominio en los niños.

Nivel Dos

## Increasing Quality Training

April 28th, 2016

**CRN:**1089923 **Cost:** Free **Time:** 6:00 pm—9:00 pm **Presented by:** N. Ochoa **Location:** TDC **CKC:** Program Management (PM)

This session is the first step to participating in Oregon's Quality Rating and Improvement System (QRIS). Oregon's QRIS recognizes, rewards and builds on what you are already doing well and provides free tools, financial incentives and professional support to increase and document your quality. In this session participants will explore QRIS participation through a step by step breakdown of the QRIS process and criteria and get an in depth look at the benefits of participating in Oregon's QRIS.

Set One

## TALE: Modulo 4: Involucramiento Familiar

4 de Mayo del 2016

**CRN:**1089930 **Costo:** \$12 **Horario:** 6:30pm-8:30 pm **Presentador:** N. Ochoa **Lugar:** HRICC **CKC:** Sistemas Familiares y Comunitario (FCS)

Profesionales de la edad escolar juegan un papel importante en el apoyo del desarrollo de la literatura. En esta sesión, participantes aprenderán maneras de enfrentarse a las barreras del involucramiento de las familias, aprenderán actividades que involucran a familias en los esfuerzos de literatura en los programas después de la escuela, y el recibirán recursos para involucrar a las familias y la comunidad. Participantes también entenderán la importancia de proveer una variedad de oportunidades para escribir.

Nivel Uno

Español

Español

# SPRING TRAINING SCHEDULE 2016

To Register Call: [541-506-6011](tel:541-506-6011) or Register Online at: [www.cgcc.edu/childcare/calendar](http://www.cgcc.edu/childcare/calendar)

## Ethics and the Childhood Provider

May 6th, 2016

**CRN:**1089919 **Cost:** \$20 **Time:** 9:00 am—12:00 pm **Presented by:** R. Donaldson **Location:** TDC **CKC:** Personal, Professional & Leadership Development (PPLD)

Working with children, families, and communities can present difficult challenges based on values and ethics. In this workshop, participants will understand the basics of professional ethical conduct and learn and practice how to apply the code to their relationships within their work and community settings.

Set Two

## Linking Curriculum, Outcomes & Child Development

May 10th, 2016

**CRN:**1089924 **Cost:** \$20 **Time:** 6:00 pm-9:00 pm **Presented by:** A. Lamanto **Location:** TDC **CKC:** Learning Environments & Curriculum (LEC)

How do you support positive outcomes and child development? Curriculum and effective teaching strategies are foundational components to ensuring that children are supported in their development. Through group discussions, case scenarios and activities we will explore the linkages between these elements and strategies for effectively promoting learning.

Set Two

## Connecting with Families

May 19th, 2016

**CRN:**1089917 **Cost:** \$20 **Time:** 6:00 pm-9:00 pm **Presenter:** T. Marino **Location:** TDC **CKC:** Family and Community Systems (FCS)

Connecting and communicating with families can be challenging. Establishing family relationships is important when we care for children. Join us as we examine strategies for connecting and communicating with families in ways that are authentic within your program structure.

Set Two

## Reflection as a Practice

May 23rd, 2016

**CRN:**1089933 **Cost:** \$20 **Time:** 6:00 pm– 9:00 pm **Presenter:** T. Marino **Location:** TDC **CKC:** Personal, Professional and Leadership Development (PPLD)

While we often reflect how certain activities or interactions are going - we frequently don't apply this information in changing what we do. Join us as we explore reflection as a practice for teaching, learning, and leading in the classroom.

Set Two

## Reflexión como Práctica

26 de Mayo del 2016

**CRN:**1089919 **Costo:** \$20 **Horario:** 6:00 pm-9:00 pm **Presentador:** S. Kristin **Lugar:** HRICC **CKC:** Desarrollo Personal, Profesional, y de Liderazgo (PPLD)

Mientras reflexionamos seguido sobre como ciertas actividades o interacciones se desarrollan – frecuentemente no aplicamos esta información en cambiar lo que hacemos. Acompañenos en explorar la reflexión mientras practicamos como dirigir la enseñanza, el aprendizaje, y como dirigir el salón de clase.

Nivel Dos

## Including Samuel

June 1st, 2016

**CRN:**1089922 **Cost:** \$20 **Time:** 6:00 pm-9:00 pm **Presenter:** N. Patten **Location:** TDC **CKC:** Special Needs (SN)

We will explore and apply inclusive philosophies during this 3 hour session. It is centered around viewing Dan Habib's award winning documentary about the hopes and struggles of his family to fully include his son Samuel in their community. Group facilitated conversation and personal reflective activities follow the film.

Set Two

## Working with Families

June 14th, 2016

**CRN:**1089931 **Cost:** \$20 **Time:** 6:00 pm– 9:00 pm **Presenter:** R. Donaldson **Location:** TDC **CKC:** Family and Community Systems (FCS)

Working with families can enrich your program and provide positive supports for everyone. In this workshop we will explore key influences and family dynamics. In addition we will discuss how misunderstandings can occur and how to resolve conflicts constructively.

Set Two

### COLUMBIA GORGE COMMUNITY COLLEGE IS AN EQUAL OPPORTUNITY EDUCATOR AND EMPLOYER.

It is the policy of Columbia Gorge Community College and its Board of Education that there will be no discrimination or harassment on the grounds of race, color, sex, marital status, national origin, religion, age, disability, veteran status, sexual orientation, and any other status protected by applicable local, state, or federal law in any educational programs, activities, or employment. Persons having questions about equal opportunity and nondiscrimination should contact: **Employment:** Courtney Judah 541-506-6151, **Civil Rights:** Lori Ufford 541-506-6026, **Advising and Career:** Mike Taphouse 541-506-6026, **Disabilities:** Shayna Dahl 541-506-6046.

# Safety Set Trainings

## DHS Child Care Provider Orientation

This class gives you information on DHS Child Care Programs. It helps you understand the listing and billing process. You will learn how to become eligible for the DHS Enhanced Rate. By taking some classes, you can get paid more from DHS. You will also hear about the SEIU union that represents unlicensed family child care providers. Come meet other providers and bring questions you have about DHS Child Care. This is a Set One class in Program Management.

\* Contact Child Care Partners directly to register.

Date	Time	Location	Cost
April 18th, 2016	6:30 pm—8:30 pm	The Dalles Campus	FREE
June 29th, 2016	6:30 pm—8:30 pm	Hood River Indian Creek Campus	FREE

## Recognizing & Reporting Child Abuse & Neglect

In Oregon, child care providers and early childhood educators are required by law to report child abuse and neglect. As a mandatory reporter, you are the crucial link in the child protection system. Learn about the signs of abuse and neglect. Learn what to report, how to report it, who to call to report and who will respond to the report. This class can be repeated to count toward Office of Child Care license renewal as follow: Registered Family Child Care, once every 5 years and Certified Center/Certified Family Child Care, once every 3 years. This is a Set One class in Health, Safety and Nutrition.

\* To Register call Student Services at 541-506-6011 or visit [www.cgcc.edu/childcare/calendar](http://www.cgcc.edu/childcare/calendar)

Date	Time	Location	Cost
May 2nd, 2016	6:30 pm—8:30 pm	The Dalles Campus	\$ 10.00

## First Aid/CPR & AED

The Heartsaver First Aid Course teaches rescuers to effectively recognize and treat adult emergencies in the critical first minutes until emergency medical services personnel arrive. The course also provides a complete health and safety training solution for first aid, adult/infant CPR, and Automated External Defibrillation AED. Course meets State of Oregon child care licensing requirement. Lab fee includes pocket mask. American Heart Association (AHA) requires all students to have a copy of the course textbook to prepare for the course and to have available for personal use. YOU MUST BRING YOUR COPY OF THE TEXTBOOK WITH YOU TO CLASS. The book can be purchased online (ISBN: 978-1-61669-017-5) or at The Dalles campus bookstore 541-506-6061.

\* To Register call Student Services at 541-506-6011 or visit <http://www.cgcc.edu/schedule>

Registration Deadline is the Wednesday before class.

Date	Time	Location	Cost
April 9th, 2016	8:30 am—1:30 pm	The Dalles Campus	\$ 55.00
May 21st 2016	11:00 am—4:00 pm	The Dalles Campus	\$ 55.00
June 11th, 2016	8:30 am—1:30 pm	Hood River Indian Creek Campus	\$ 55.00

## Food Handlers Certification

Food Handler certification may be completed online at: <http://triwou.org/pages/show/ccccrr-food-handler-certification>. Or you may purchase a Self-Study packet for \$10.00 by contacting Child Care Partners at 541-506-6131 or [ccp@cgcc.edu](mailto:ccp@cgcc.edu). This is a Set One class in Health Safety & Nutrition.



# Additional Training:

## Read and Reflect

Read and Reflect is a training opportunity that allows you to receive additional training when you are unable to easily attend classroom training. **The Read and Reflect training packet** consists of reading materials based on specific topics with an action activity, reflection component and activity worksheets. These trainings are accepted by the Oregon Registry and count towards the training requirements of the Early Learning Division. **You will receive 1 clock hour of training. Cost is \$15.** You can request a packet from Child Care Partners.

## ONLINE Training:

*We are excited to offer online courses in partnership with Ask Phoenix Solutions to help support you and your professional development goals!*

These online trainings include a variety of Set 1, Set 2, and Set 3 classes. Take a look at the Ask Phoenix Solutions courses available to you at: [www.askphoenixsolutions.com/courses](http://www.askphoenixsolutions.com/courses). Next, go to our partner page at: [www.askphoenixsolutions.com/ccp](http://www.askphoenixsolutions.com/ccp).

Once you have chosen a course, fill out the registration form and submit your payment. You can mail the payment to Ask Phoenix Solutions or pay online. **The charge is \$15 per hour for individual courses.** (As an example a 3 hour training would cost \$45.) Once they receive your registration form and payment, they will send you an enrollment key that will give you access to your course.

Check out the “PARTNERS” Quick Start Guide for helpful information on enrolling and participating in an Ask Phoenix Solutions course. The guide is located on the APS Campus Home Page: [www.ASKphoenixsolutions.com/phoenixsolutions](http://www.ASKphoenixsolutions.com/phoenixsolutions).

Once you have completed the course CCP will be contacted, so we can enter your training into ORO and send you a certificate.

If you have any questions about the coursework or APS campus, please feel free to contact Ask Phoenix Solutions. You can call for technical assistance 8:30 am—8:30 pm Monday through Friday and Saturday from 10:00 am—12:00 pm at **503-419-7023**. You may also email: [CAMPUSadmin@askphoenixsolutions.com](mailto:CAMPUSadmin@askphoenixsolutions.com) if you do not need an immediate response (they will get back to you within 24-48 hours).

## PROFESSIONAL IMPROVEMENT GROUP (P.I.G.)

5:00 PM— 6:30 PM

At Child Care Partners

Located on The Dalles Campus

Building 2, 1st Floor

Contact: 541-506-6131



Third Wednesday of Each Month

\* Please let us know if you plan to attend :)

### P.I.G. offers:

Professional Development  
Advising

Individualized Support

Work Sessions

Oregon Registry Online

QRIS Support

CDA Support

Resources (Books, Forms, etc.)

All “Ask Phoenix Solutions” trainings are also available to be presented face-to-face in our region. If interested in a particular course let Child Care Partners know which training you would like to see offered.

# Ready to get started?

In this section you will find information and resources that will help you get started with Oregon's QRIS.

## Move up on the Oregon Registry!

Oregon's QRIS Personnel Qualifications standards are based on the Oregon Registry. Be sure that you and your staff have submitted the correct documentation to receive the most current Step to the [Oregon Center for Career Development](#).

## Get your policies and procedures written down and up to date!

You know what you do and why you do it, but does your staff? Do parents, families and community? Develop and/or update written policies on things like behavior management, meal times, personnel policies, inclusion, parent engagement, etc. Start drafting or refining your policies now, to reflect how your program operates. You can attend a workshop on policy development by visiting the [Oregon Registry Online Training Calendar](#).

## Get parents involved in your program!

Including families in your program is an important part of quality. Take a look at your program and assess how much parent involvement you have. How do you engage parents and families? Evaluate what you do well and work towards best practice family engagement! You can download the [Family Survey](#) and begin using it today!

## Learn about research based screening and assessment tools and how to use them!

Oregon's QRIS mirrors Oregon's Early Learning Council emphasis on screening and assessing children. If you are not already using research based tools to screen and assess your children, attend a training to learn about them and choose the best option for your program [Oregon Registry Online Training Calendar](#) or visit [asqoregon.com](#)

## Make sure your program uses a curriculum that supports all children's learning and development!

There are a number of well-respected curriculums used by early childhood programs that satisfy the criteria of Oregon's QRIS. Remember, choosing and implementing a curriculum that is right for you takes time so get started now! Find a class on the [Oregon Registry Online Training Calendar](#) to learn more about implementing curriculum.

For any Support or Questions, Child Care Partners will be more than happy to help you or direct you to the correct person! We want all of you to Succeed!

# Oregon's QRIS

## Calling All Family Child Care Providers!

Completed the IQT and not sure where to go next?

Haven't taken the IQT, but are interested to learn more?

How would you like to receive up to **\$2000** in funds to support continuous Quality Improvement in your Program?

For more information give us a call at **541-506-6131**.

The following programs have made a commitment to providing quality child care (since the last Newsletter):

★ **C2Q Program - Lumi's Daycare** ★

**CONGRATS!** The following programs have received a Star Rating (since the last Newsletter):

★ **4 Star— OCDC Odell** ★

**4 Star— Spray Cooperative Preschool**

**5 Star— North Sherman Preschool**

★ **5 Star— OCDC The Dalles** ★

# News Update

## Education Award Distribution Changes

The following changes are occurring in early 2016 to the Oregon Registry Education Awards.

### QRIS Second Education Awards:

Second education awards granted for personnel working in QRIS Star Rated programs are being discontinued. For details look for the 2016 Education Award Changes FAQ at <http://www.pdx.edu/occd/whats-new>

### New Oregon Registry Step Education Awards Structure after January 29<sup>th</sup> 2016:

The new funding structure for completed Step applications received after January 29, 2016 will be as follows:

**Milestone 1 (Step 3-6) = \$100**

**Milestone 2 (Step 7-8.5) = \$150**

**Milestone 3 (Step 9 or above) = \$200**

There will no longer be education awards for licensed exempt providers, unless they are actively serving children receiving DHS subsidy. The eligibility criteria stays the same.

For details look for the 2016 Education Award Changes FAQ at <http://www.pdx.edu/occd/whats-new>

Oregon  
Department of  
Human Services



## DHS Child Welfare for District 9

Serving Gilliam, Hood River, Sherman, Wasco and Wheeler Counties

To make a report of child abuse or neglect, please use our new and improved hotline number:

**1-855-541-0042**

(During Normal Business Hours ▪ 8:00 am—5:00 pm▪ Mon.-Fri.)

**Non-Business Hours and Holidays Call: 911**

**Fax Number : 541-386-7066**

## News about the ERDC Program

### New in 2016 — Tiered Reimbursement Bonuses

Beginning in the spring of 2016, QRIS star rated programs will be able to receive tiered reimbursement bonuses for each child in their program receiving Employment Related Day Care (ERDC). Programs will receive their regular ERDC rate plus a per child bonus based upon their star rating. 3-star programs will receive an additional \$54 for each child attending full time, 4-star programs \$72 and 5-star programs \$90. These efforts are to encourage families to choose quality care and to support programs participating in Oregon's QRIS.



## Cambios a la Distribución de Recompensas Educativas

Los siguientes cambios están ocurriendo en las Recompensas Educativas del Registro de Oregon.

### QRIS Recompensas Educativas Segundas:

Las recompensas educativas segundas que eran otorgadas al personal trabajando en programas que han sido calificados con 3, 4, o 5 estrellas, serán discontinuadas. Para ser considerados a recibir una recompensa educativa segunda, Teaching Research Institute (El Instituto de Investigación del Aprendizaje) en Western Oregon University (en la Universidad de Oregon del Oeste) deben recibir un portafolio de QRIS completado antes del 29 de Enero del 2016 (para los programas utilizando materiales en Español o Ruso, será antes del 31 de Marzo del 2016). El Centro de Oregon para el Desarrollo Profesional en Cuidado y Educación de Niños (OCCD) tienen que recibir el paquete de la segunda Recompensa Educativa antes del 29 de Abril del 2016.

### La Nueva Estructura de Recompensas Educativas de Oregon a partir del 29 de Enero del 2016:

La nueva estructura de fondos para Recompensas Educativas completadas que son recibidas a partir del 29 de Enero del 2016 serán como se indica a continuación:

**Hito 1 (Paso 3-6) = \$100**

**Hito 2 (Paso 7-8.5) = \$150**

**Hito 3 (Paso 9 o más) = \$200**

Ya no habrá recompensas educativas para proveedores exentos de licenciatura, al menos que estén activamente sirviendo niños que reciben subsidio mediante DHS (Departamento de Servicios Humanitarios). El criterio de elegibilidad se mantiene igual. Para más detalles de los cambios en las recompensas educativas del año 2016 y para ver las respuestas de la preguntas frecuentemente preguntadas, visite: <http://www.pdx.edu/occd/whats-new>.

Oregon  
Department of  
Human Services



## DHS Bienestar Infantil del Distrito 9

Sirviendo a los Condados de Gilliam, Hood River, Sherman, Wasco y Wheeler

Para reportar algún abuso o negligencia, por favor de usar nuestro nuevo numero de teléfono directo:

**1-855-541-0042**

(Durante Horas de Operación ▪ 8:00 am—5:00 pm ▪ Lun.-Vier.)

**Horas fuera del Horario Normal o Durante Festividades, Llame al : 911**

**Numero de Fax: 541-386-7066**

## Noticias sobre el programa de ERDC (Employment Related Day Care)

### Nuevo en el 2016– Bonificación de Rembolsos Escalonados

Comenzando en la primavera del 2016 los programas que han sido calificados en QRIS podrán recibir rebolsos de bonificación para cada niño en sus programa que recibe Employment Related Day Care (ERDC). Programas recibirán la tarifa regular, y adicionalmente un bono por cada niño, después de haber recibido una calificación de estrella. Programas con la calificación de 3 estrellas recibirán \$54 dólares adicionales por cada niño que asiste a su cuidado de tiempo completo, programas con la calificación de 4 estrellas recibirán \$72 y programas con la calificación de 5 estrellas recibirán \$90. Tales esfuerzos son para animar a las familias a escoger cuidado infantil de calidad y para apoyar a los programas que están participando en el programa de QRIS de Oregon.

## Oregon AEYC Spring Conference

**What:** Oregon AEYC Spring Conference

**When:** April 15 & 16, 2016

**Where:** The Center for Meeting & Learning at Lane Community College, 4000 E 30th Ave, Eugene, OR 97405

Friday, April 15th will include both the Annual Infant Toddler Symposium and the Articulation Summit. Saturday, the 16th is the Spring Conference, which will include high quality training, networking opportunities, exciting speakers and excellent exhibits and resources. Lunch is included both days.

### Questions?

**Email:** [OAEYC@oregonaeyc.org](mailto:OAEYC@oregonaeyc.org) or

**Phone:** 503-496-3991 or 1-800-452-3610

**Website:** [oregonaeyc.org](http://oregonaeyc.org)



## Children Bring Communities Together Conference

**Dates:** Friday April 15, 2016 from 6:00-9:00 pm and Saturday, April 16, 2016 8:00-3:30 pm

**Location:** Blue Mountain Community College, Pendleton, Oregon.

**Place:** Pioneer Hall/Science & Technology Hall

**Registration Fee:** Early Bird Rate: \$45.00

**Registration Fee after March 31, 2016:** \$55.00

Payment must accompany registration.

**Registration deadline:** April 11, 2016

Registration will be taken on-site.

Class selection not guaranteed.

**To Register contact CCR&R at UMCHS:**

541-564-6878 or

Visit: [www.umchs.com/programs/ccrr](http://www.umchs.com/programs/ccrr)

For the Registration Brochure Visit:

[Children Bring Communities Together Conference.](#)

We Will  
Miss YOU!



## Happy Retirement Kathleen!

After 15 years with Child Care Partners, Kathleen McFarlane has retired. Kathleen is excited to spend more time with her family, including her 1 year old granddaughter and working in her garden this spring. Please join us in wishing Kathleen a happy and relaxing retirement!

# Activities • Actividades



**Nature Sensory Bag & Sun Catcher**

Have children collect flowers and leaves and put in a clear bag with hair gel. Tape onto the window.

Deje a los niños que junten flores y hojas. Colóquelas en una bolsa con gel para el pelo. Pegue la bolsa en la ventana con cinta adhesiva.

Fill a container with potting soil and fake (or real) plants, flowers, small pots and gardening tools.

Llene un recipiente con tierra para plantas y flores artificiales o reales y macetas con herramientas para el jardín.

**Garden Sensory Bin**



No matter how big or small, just get your kids involved and have fun!

¡No importa que tan grande o pequeño, con que anime al los niños a divertirse!

**Plant a Garden**



Using a fork, dip into paint and then press onto paper. Use a paintbrush for the stems.

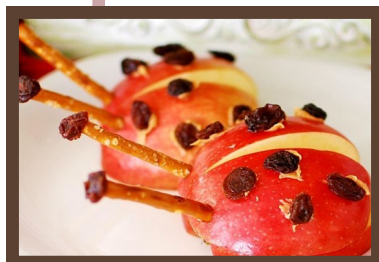
Utilizando un tenedor, sumérgelo en la pintura y presiónelo en el papel. Use la brocha de pintura para hacer el tronco de la flor.

**Tulip Art**



**Apple Ladybug Treats**

- 2 red apples
- 1/4 cup raisins
- 1tb peanut butter
- 8 pretzel sticks
- Small pieces of carrots & raisins
- Toothpicks & pretzels



- 1) Slice apples in half from top to bottom and scoop out the cores using a knife or melon baller. If you have an apple corer, core them first, then slice. Place each apple half flat side down on a small plate.
- 2) Dab peanut butter on to the back of the 'lady bug', then stick raisins onto the dabs for spots. Use this method to make eyes too. Stick one end of each pretzel stick into a raisin, then press the other end into the apples to make antennae.



**Flower Printing**

Dip flowers into paint and press onto paper or use like a paint brush.

Sumerge las flores en la pintura y presiónelas en el papel o utilice las flores como brochas de pintura.

Let children decorate their shell with marker pens. Stuff egg with cotton balls, sprinkle water cress seeds and add a little water. Place in a sunny place and watch!

Deje a los niños decorar las cascaras del huevo con marcadores. Rellénelo con algodón, rociar con las semillas de berro, y agregue un poco de agua. Colóquelo en un lugar soleado y vigile.

**Water Cress Heads**





# Child Care Partners



**Child Care Resource & Referral of  
Gilliam, Hood River, Sherman, Wasco,  
and Wheeler Counties.**

**Website:** [www.cgcc.edu/childcare](http://www.cgcc.edu/childcare)

**Email:** [ccp@cgcc.edu](mailto:ccp@cgcc.edu)

**Main Phone:** 541-506-6131

---

**Nancey Patten**

*Director*

*[npatten@cgcc.edu](mailto:npatten@cgcc.edu) • 541-506-6130*

**Noemí Macías**

*Bilingual Quality Improvement Specialist*

*[nochoa@cgcc.edu](mailto:nochoa@cgcc.edu) • 541-506-6134*

**Kristen Richelderfer**

*Quality Improvement Specialist*

*[krichelderfer@cgcc.edu](mailto:krichelderfer@cgcc.edu) • 541-506-6135*

**Office Hours:**

Monday - Friday 9:00am - 4:00pm

**Referral Hours:**

Monday - Thursday 9:00am - 4:00pm

**Location: Columbia Gorge Community College**

400 East Scenic Drive The Dalles, OR 97058

**Like us on FACEBOOK**



**[Child Care Partners will be closed:](#)**

**March 31st– Staff Training in Salem**

**April 20th– Staff Training at WOU**

**May 30th—Memorial Day Holiday**

Child Care Partners is a member of **Child Care Aware of America.** [www.naccra.org](http://www.naccra.org)