



Pathways



....to professional development

Child Care Partners

Child Care Resource & Referral of Gilliam, Hood River, Sherman, Wasco, and Wheeler Counties .



Hanging Out With Philip

CHANGES IN REGISTERED FAMILY CHILD CARE TRAINING REQUIREMENTS

In January 2015, The Early Learning Council adopted revised rules for Registered Family Child Care Homes. Highlights of the changes as summarized below.

Effective Immediately:

Infant/Child First Aid, CPR, and Food Handler's certifications must be current AT ALL TIMES.

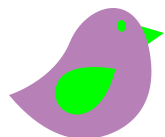
Effective July 1, 2015:

Substitute providers must have current certification in Infant/Child CPR and First Aid and if they serve food, a Food Handler's certification.

Registered providers must complete 10 clock hours of professional development training required for every two year license period.

Please contact your licensing specialist if you have any questions about the revised Registered Family Child Care Home rules.

Use this link <http://www.oregon.gov/OCC/Pages/OCCForms.aspx> to view a finalized version of the rules.



CAMBIOS EN LOS REQUISITOS DE ENTRENAMIENTO PARA EL CUIDADO INFANTIL FAMILIAR REGISTRADO

En Enero del 2015 el Comité de Aprendizaje de la Edad Temprana, adopto las reglas revisadas para los hogares de Cuidado Infantil Familiar Registrado. La información resaltada está resumida a continuación.

Efectivo Inmediatamente: Tarjeta de cardiaco pulmonar resucitación (CPR), primeros auxilios, y las certificaciones del manipuladores de alimentos deben estar actualizadas EN TODO MOMENTO.



Efectivo a Partir del 1 de Junio del 2015: Sustitutos de proveedores tienen que tener certificación actualizada de cardiaco pulmonar resucitación (CPR), primero auxilios, y tarjeta de manipuladores de alimentos para infantes y niños pequeños.

Proveedores tendrán que completar 10 horas de entrenamiento de desarrolló profesional que es requerido cada dos años del periodo licenciado.

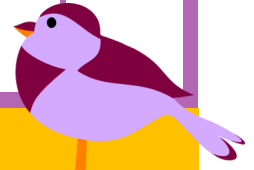
Por favor de ponerse en contacto con su especialista de licencia si tiene algunas preguntas sobre los regulatorios revisados del Cuidado Infantil Familiar Registrado.

Utilice este link <http://www.oregon.gov/OCC/Pages/OCCForms.aspx> para ver la versión final de los regulatorios.

Spring 2015
Issue 37

April 2015

Sun	Mon	Tue	Wed	Thu	Fri	Sat
Register: 541-506-6011			1	2	3	4
5	6	7	8	9 RRCAN 6:30 pm	10	11
12	13	14	15 PIG 5pm	16 Music Therapy 6 pm	17	18
19	20	21	22	23	24 Pieces Together 9 am	25
26	27 Equidad de Género 6 pm	28 Preschool to Kindergarten 6 pm	29	30 IQT 6 pm		

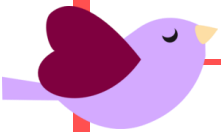


May 2015

Sun	Mon	Tue	Wed	Thu	Fri	Sat
					1	2 Conversaciones Diversas 9 am
3	4	5	6	7 Early Words 6 pm	8 Saying "NO" 9 am	9
10	11 RRCAN 6:30 pm	12	13	14 Mantener la Conversación 6 pm	15	16
17	18	19 IQT 6 pm	20 PIG 5 pm	21 Honor Family 6 pm	22	23
24	25	26	27	28	29	30

June 2015

Sun	Mon	Tue	Wed	Thu	Fri	Sat
	1	2	3	4	5	6
	8 Inclusion In Action 6 pm	9	10 RRCAN 6:30 pm	11	12	13
14	15	16	17 PIG 5 pm	18	19	20
21	22	23 IQT 6 pm	24	25	26	27
28	29	30	www.cgcc.edu/childcare/calendar			





We want to THANK YOU for your EFFORTS on attending trainings and SUPPORTING Child Care Partners!

Here are more trainings that are available for your growth as professionals.

4/9- Recognizing & Reporting Child Abuse and Neglect 6:30-8:30 pm HRICC- Participants will learn the process for reporting incidents of child abuse or neglect. **CKC: Health, Safety & Nutrition (HSN, Set1) \$10**

4/15- P.I.G. 5-7:30 pm TDC: CANCELED—OUT OF TOWN MEETING. CANCELADO-JUNTA.

4/16- Music Therapy in Early Childhood : Tips and Tools for the Trade 6-9 pm TDC– Come learn about early childhood musical development as tied to developmental milestones. Guaranteed to be fun and functional! **CKC: Human Growth and Development (HGD, Set 1) \$20**

4/24- Putting the Pieces Together 9 am-12pm TDC - Participants will understand the Early Learning Systems and how they all relate to each other. **CKC: Personal, Professional & Leadership Development (PPLD, Set 1) \$12**

4/27- La Equidad de Género en el Salón de Clases 6pm– 9pm TDC– En este curso vamos a explorar el impacto de las actitudes y creencias sobre equidad de género. **CKC: Diversidad (DIV, Nivel 2) \$20**

4/28- Making the Connection: Preschool to Kindergarten 6pm—9pm TDC– Communicating with school district staff and teachers regarding the transition from pre-school to kindergarten has often been difficult, join us to learn the easiest way to "MAKE THE CONNECTION."- The Dalles Only **CKC: Personal, Professional & Leadership Development (PPLD, Set 1) FREE**

4/30- Increasing Quality Training 6-9 pm HRICC: This session is the first step in participation in Oregon's Quality Rating and Improvement System (QRIS). **CKC: Program Management (PM, Set 1) FREE**

5/2 - Conversaciones Diversas con Diversos Individuos 9am - 3pm TDC– Examinaremos nuestros estilos de comunicación personal y también los métodos. **CKC: Diversidad (DIV, Nivel 2) \$20**

5/07 - Early Words: The Magic of Children's Literature 6-9 pm TDC: This class will introduce ways to engage children in the magic of literature. Join us in learning the DO's and DON'TS of book reading. **CKC: Learning Environments and Curriculum (LEC, Set 1) \$12**

5/8 - Setting Boundaries, Saying "No." 9 am –12 pm TDC - Join us as we explore the psychological importance of saying no. **CKC: Understanding & Guiding Behavior (UGB, Set 2) \$20**



5/11 - Recognizing & Reporting Child Abuse and Neglect 6:30-8:30 pm HRICC - Participants will learn the process for reporting incidents of child abuse or neglect. **CKC: Health, Safety & Nutrition (HSN, Set1) \$10**

5/14 - Maneras de Mantener la Conversación con los Adultos 6 pm-9pm TDC– . A través de discusiones y técnicas para escuchar activamente practicaremos cómo mantener la conversación y expresar lo que necesita ser dicho de una manera productiva . **CKC: Administración de Programas (PM, Nivel 1) \$20**

Call to Register at: 541-506-6011 or Online at www.cgcc.edu/childcare/calendar

It is the policy of Columbia Gorge Community College and its Board of Education that there will be no discrimination or harassment on the grounds of race, color, sex, marital status, national origin, religion, age, disability, veteran status, sexual orientation, and any other status protected by applicable local, state, or federal law in any educational programs, activities or employment.

Persons having questions about equal opportunity and nondiscrimination should contact:

Employment: Robb Van Cleave, Chief Talent & Strategy Officer—(541) 506-6151

Educational and Student Programs, Activities, and Services: Lori Ufford, Chief Academic and Student Affairs Officer—(541) 506-6031

5/19 - Increasing Quality Training 6-9 pm HRICC: This session is the first step in participation in Oregon's Quality Rating and Improvement System (QRIS). **CKC: Program Management (PM, Set 1) FREE**

5/20 - P.I.G. 5-7:30 pm TDC: Are you working on your CDA? Do you need assistance with the Oregon Registry? Do you need individual support with QRIS? **(Work Session) FREE**

5/21 - Honoring Our Families Cultures 6-9 pm TDC: This workshop focuses on developing a culturally responsive early learning and development program (ELDP). **CKC: Diversity (DIV, Set 2) \$20**

5/30 - Children's Fair 10-2 pm : The Dalles City Park—Free Activities.

6/08 - Inclusion in Action: Strategies for Supporting Young Children with Autism Spectrum Disorder 6-9 pm TDC: During this session participants will explore strategies of working with children with ASD in early childhood settings. **CKC: Special Needs (SN, Set 2) \$20**

6/10 - Recognizing & Reporting Child Abuse and Neglect 6:30-8:30 pm HRICC - Participants will learn the process for reporting incidents of child abuse or neglect. **CKC: Health, Safety & Nutrition (HSN, Set1) \$10**



6/17 - P.I.G. 5-7:30 pm TDC: Are you working on your CDA? Do you need assistance with the Oregon Registry? Do you need individual support with QRIS? **(Work Session) FREE**

6/23 - Increasing Quality Training 6-9 pm HRICC: This session is the first step in participation in Oregon's Quality Rating and Improvement System (QRIS). **CKC: Program Management (PM, Set 1) FREE**

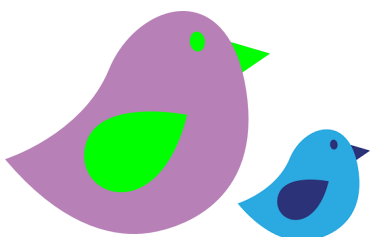
For CRN numbers' and full descriptions please visit cgcc.edu/childcare/calendar

VISITING THE REGION'S PRE-SCHOOLS AND SELECTED CHILD CARE PROVIDERS

Early school success depends upon many factors, including a smooth transition from pre-school to Kindergarten. What practices foster a successful transition, what barriers make that transition more difficult, and how can these barriers be overcome? These are questions to be addressed in upcoming work through the Four Rivers Early Learning Hub and the Region's 10 school districts. Starting in April an independent contractor, **Dan Spatz**, will be visiting the region's pre-schools and selected child care providers to inventory curricula, best practices, and other factors that contribute to Kindergarten

readiness. Spatz, a resident of The Dalles, is former development director for Columbia Gorge Community College. He is working through an independent contract with Columbia Gorge ESD, which is coordinating this project with North Central ESD. A second contractor, Paul Lindberg, will be conducting related outreach to the region's school districts. Results and recommendations will be provided to the seven-county Regional Achievement Collaborative to help inform strategies for early school success.

Child Care Partners will be contacting programs offering Preschool to schedule a time to visit with Dan Spatz, as we work collaboratively to acknowledge the strategies for early school success. As advocates of Children and Families your voice is critical to the work that we do!



SONGS TO SING WITH CHILDREN

BABY CHICKS ARE SINGING

Baby Chicks are singing, pio, pio, pio
Mama we are hungry, mama we are cold
Mama brings them dinner, and she keeps
them warm.



LOS POLLITOS DICEN

Los pollitos dicen pío, pío, pío
Cuando tienen hambre, cuando tienen frío
La gallina busca el maíz y el trigo, les da la comida, y les
presta abrigo.

Look for an **upcoming SURVEY** from **Child Care Partners**. We need your feedback in order to provide you with the **best service possible**.

Cherry Festival Parade

APRIL 25TH, 2015

Watch out for our participation
to promote the Children's Fair



Reminder When Attending Trainings

Please be on time. Classes will begin at their published start time. Participants who miss more than 15 minutes of class because of late arrival or leaving early will not be given full credit for the class. Total hours on your certificate will be changed to reflect your actual attendance.

Thank you for your respect for instructors and other participants!



Recordatorio al Asistir a los Entrenamientos

Por favor de llegar a tiempo. Clases comenzaran al tiempo indicado. Los participantes que pierden mas de 15 minutos de clase por llegar tarde o por marcharse temprano no serán dados el crédito entero por la clase. El total de horas indicado en el certificado será cambiado para reflejar la asistencia actual.

¡Gracias por respetar al instructor y a los demás participantes!

Reminder!

QRIS

6 Steps to a Star Rating



Next Available Increasing Quality Trainings:

April 30th, 2015 • At Hood River Campus • 6 pm—9pm


May 19th, 2015 • At The Dalles Campus • 6 pm—9 pm

June 23rd, 2015 • At Hood River • 6 pm—9 pm

To Register Call: **541-506-6011**




Visit. Join. Support.

 teachingresearchinstitute.org/projects/qris

 facebook.com/OregonQRIS

 twitter.com/OregonQRIS

 1-800-342-6712

The following programs have made a commitment to providing quality child care (since the last Newsletter):

Mama Shell Day Care

The Giving Tree Creative Learning Center

New Vision School, LCC

Budding Branches

Children's Fair

Fecha/Date: May 30th, 2015

Lugar/Location: The Dalles City Park

Horario/Time:

10:00 AM—2:00 PM

Costo/Cost: FREE

Outdoor Fun:

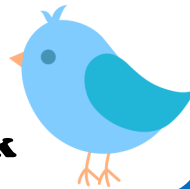
5 Games to Play with a Broom

1. Limbo - hold the broom at various heights and they have to try and go under.
2. Up and Down - It's kind of like limbo except that instead of keeping the broom steady you move it up and down while the child tries to run past.
3. Jump the Broom - Place the broom on the ground and have your child run back and forth while jumping over the broom.
4. Broom Hockey – Add some literacy to this gross motor activity by adding letters to the “puck” (i.e. bottle caps).
5. Broom Balance – Have the child practice balancing the broom on the palm of their hand.

For more FUN Ideas/ Para más Ideas Divertidas:



Child Care Partners on Facebook



Mini CONFERENCE
In September 2015

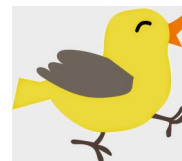
Apple and Grape Cars

Cut apples into 1/2-inch slices. Insert toothpicks horizontally into both ends of the apple slice. Slide grapes onto the toothpicks to make wheels.



Carritos de Uvas y Manzanas

Corte las manzanas en rajas de media pulgada. Inserte el mondadientes horizontalmente en los dos lados de las rajas de manzanas. Inserte las uvas en los mondadientes para hacer las llantas.



with 6
Hours of
Training

Welcome Newly Enrolled Providers

Theresa H.

Sarah O.

Petersburg Head Start

Erica P.

Mid-Columbia Adventist Christian School

Child Care Partners

Child Care Resource & Referral of Gilliam, Hood River,
Sherman, Wasco, and Wheeler Counties.

Website: www.cgcc.edu/childcare • Email: ccp@cgcc.edu • Phone: 541-506-6131

Nancey Patten, *Director*

Kathleen McFarlane, *Early Childhood Specialist*

Noemí Ochoa, *Bilingual Early Childhood Specialist/Quality Improvement Specialist*

Kristen Richelderfer, *Administrative Assistant*

Child Care Partners is a member of **Child Care Aware of America**. www.naccrra.org

Office Hours: Monday - Friday • 9:00am - 4:00pm

Referral Hours: Monday - Thursday • 9:00am - 4:00pm

Location: Columbia Gorge Community College

400 East Scenic Drive The Dalles, OR 97058

Child Care Partners will be closed:

Monday, May 25th, 2015 for the Memorial Day Holiday



Professional Improvement Group



P.I.G. offers:

- Training and Support
- Professional Development Advising
- Individualized Support
- Proof Reading
- Work Sessions
- Information/Applications for Educational Awards
- Step Applications
- Send Training to Oregon Registry Online
- Quality Improvement Plan
- QRIS Portfolio
- CDA Support
- Scholarships
- Resources (Books, Forms, Videos, Web Forums, etc.)



Third Wednesday of Each Month

5:00 PM—7:30 PM



At Child Care Partners • 541-506-6131

Located on The Dalles Campus

Building 2, 1st Floor